

Digital Cameras and Vision System

IMPORTANT PRODUCT INFORMATION FOR CUSTOMERS

As with all electronic technology advances certain components become obsolete and therefore replacement parts unattainable. Analogue cameras use a Sony CCD device and Sony has announced they are stopping manufacturing this device. At JM Heaford we continually support our customers and so here are details of the various cost effective options to ensure your moulder continues to offer excellent performance.

UPGRADE OPTIONS

Should any component parts (cameras, camera control systems, cables, register mark illuminators, TTLs) of your current analogue system need replacing the options are:

1. GO DIGITAL – INCREASE PRODUCTIVITY AND UPGRADE TO OUR NEW DIGITAL CAMERAS, DIGITAL VISION SYSTEM AND LARGER SCREENS

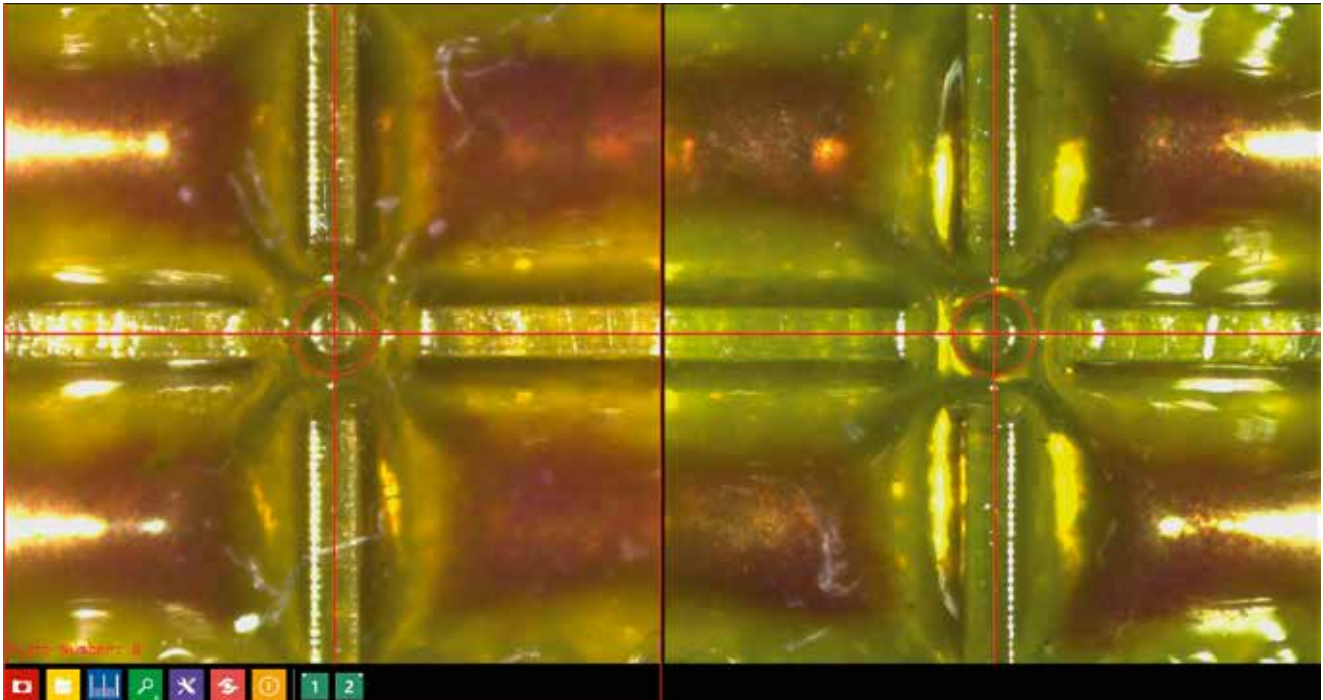
Upgrade now to a Digital Vision System and benefit immediately from all its features (and avoid the risk of having an obsolete system in the near future). A Digital Vision System comprises of the following:

- From 2 to 16 or more high (50x or 100x) magnification colour digital inspection cameras. Each camera has a high intensity LED illuminator which generates a spot of light onto the sleeve/cylinder to enable rapid positioning of the plate and illumination of the plate register marks.
- Industrial grade fan-less computer. 2GB RAM 160GB HDD, 4USB ports, operating temperature -20°C to 70°C at 00% CPU loading – completely reliable in an industrial environment.
- The standard Vision System includes brightness and contrast control, digital 2x zoom and varying sizes, colours and combinations of target crosses/circles.
- An enhanced Vision System includes all features of the standard Vision System described above and also a measuring tool for deviation from register mark; Screen shots – images with job information can be saved for quality control purposes; Target crosses/circles offset facility; Link to motor controls if moving cameras installed; Remote support software; Multi-language interface.
- A 27" touch screen displaying both camera images on a single screen in colour (for narrow web models a 21½ screen with mouse is standard).

THE UPGRADE BENEFITS INCLUDE:

- Productivity increases
- The operating life of the moulder is extended further
- Digital camera technology
- Larger clearer colour images
- Flat screen monitors
- Productive functionality via a clear concise and easy to use interface
- Applies across the full range of J M Heaford machines giving a common platform for instant operator familiarity
- Additional features to the existing analogue systems
- Utilisation of industry standard peripherals such as large touch screens, keyboards and trackballs
- Several language options available

Digital Cameras and Vision System



Digital Cameras and Vision System

OR 2. REPLACE EXISTING COMPONENTS WHILST WE HAVE STOCK

Replace components of your existing analogue camera system as required from our parts stock. We have ordered stock of analogue cameras and it is our intention to hold stock to provide replacements for the analogue camera systems for approximately 2 years. After all our purchased stock has been supplied the analogue cameras may not be available and if any other individual component that requires replacing is also not available a complete upgrade to a Digital Vision System will be required. When upgrading to a Digital Vision System all components will need to be replaced - cameras, camera control systems (now an industrial grade computer), cables and register mark illuminators. This is because none of the existing analogue system components are compatible with digital camera technology.

**Contact us now for a cost effective quotation for a solution tailored to your requirements.
service@jmheaford.co.uk. Please provide your JM Heaford machine serial number.**

J. M. Heaford has an established network of worldwide agents with full technical back up, augmented by a team of experts paying regular visits to clients.

J.M. Heaford has been manufacturing and supplying video mounting and proofing systems since the company introduced microdot technology in 1992.



J. M. Heaford Limited
9 Century Park, Pacific Road, Altrincham,
Cheshire, England WA14 5BJ.

T: +44 (0)161 928 5679
F: +44 (0)161 928 5534

E: sales@jmheaford.co.uk
W: www.jmheaford.com